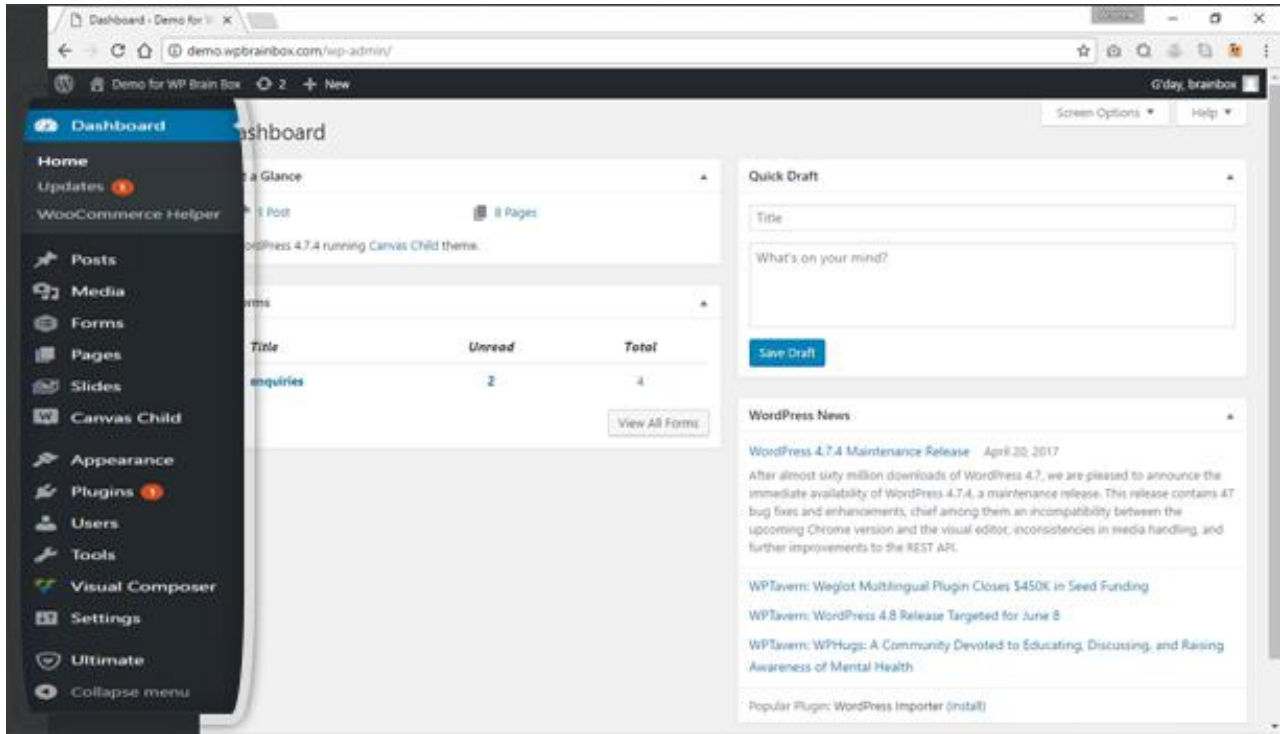
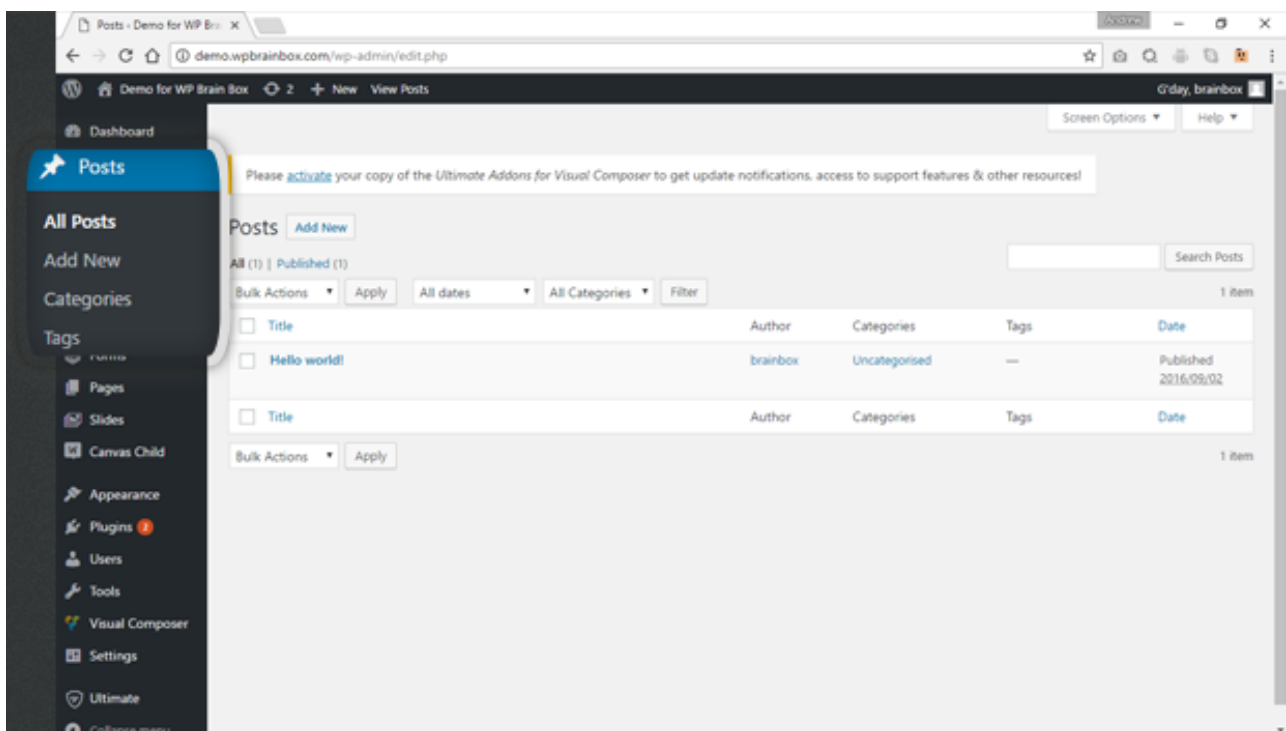


DASHBOARD SIDEBAR MENU



On the left side of your WordPress back-end dashboard, you can see the important menus. Let's see what are inside these menus.

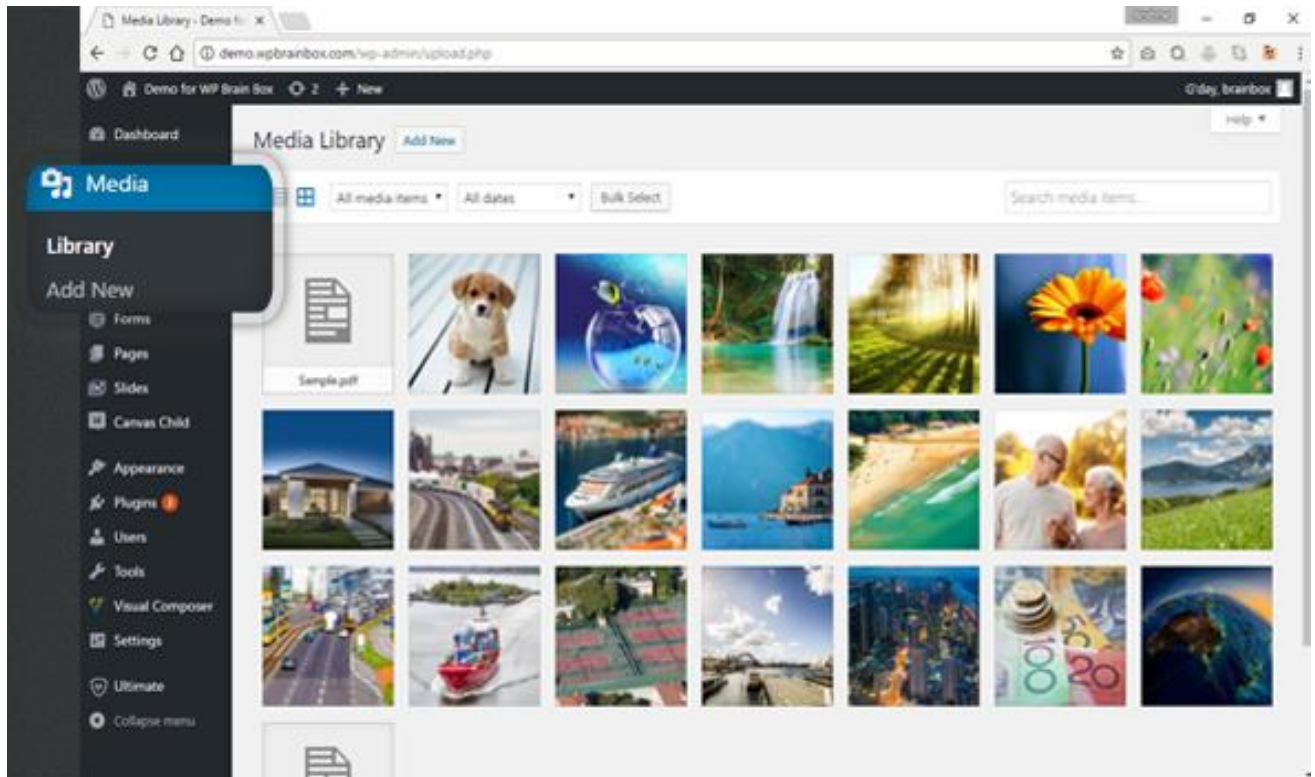
POSTS



This is where you do your blog posts, normally. Under the Post menu are:

- All Posts
- Add New
- Categories
- Tags

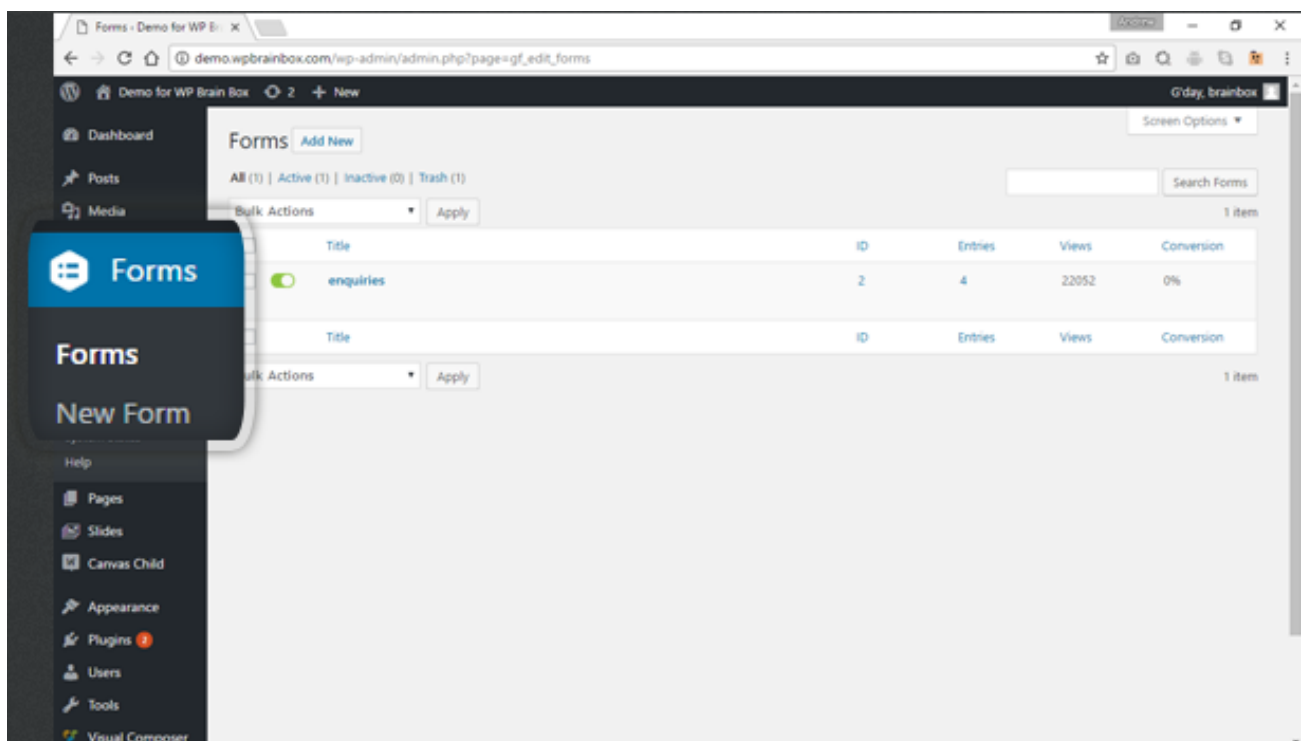
MEDIA



This is where the media library is. This is where you can upload your files like images, audios, and etc. Under Media menu are:

- Media Library
- Add New

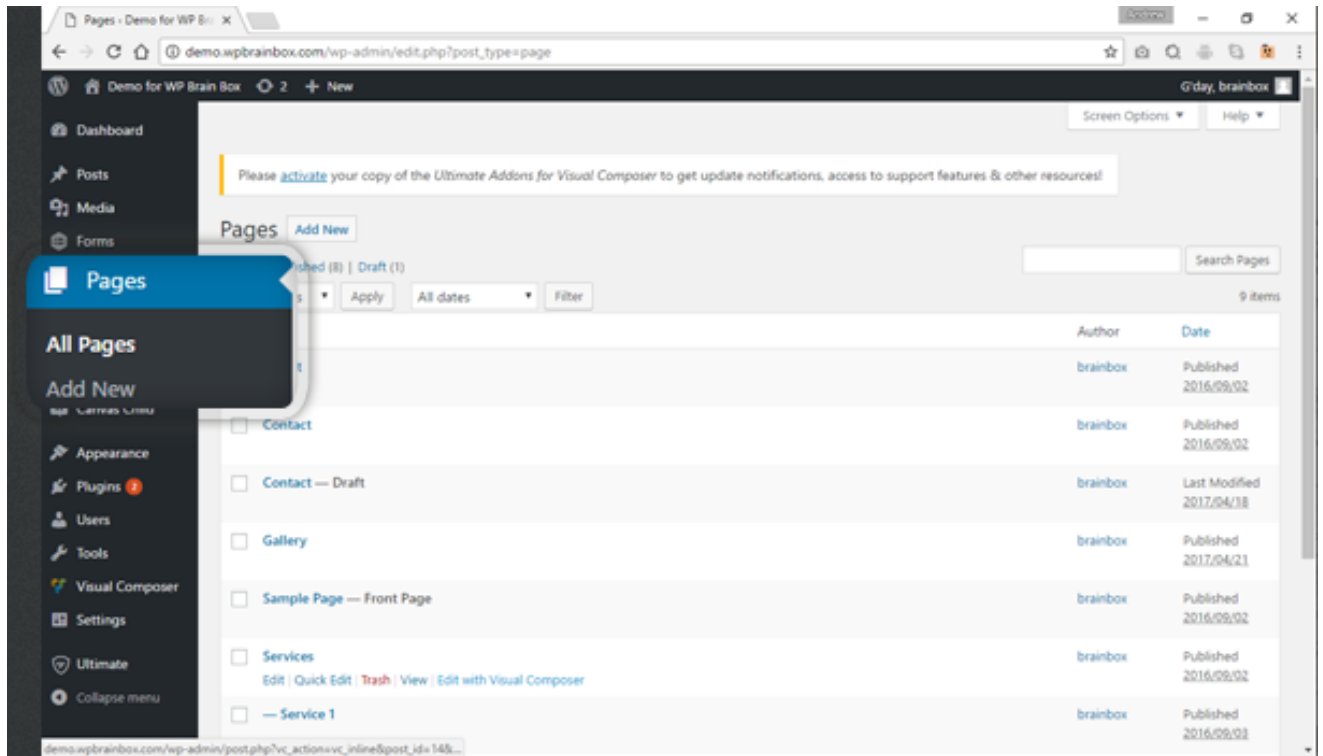
FORMS



This is where to place your gravity form section. Under Forms menu are:

- Forms
- New Forms

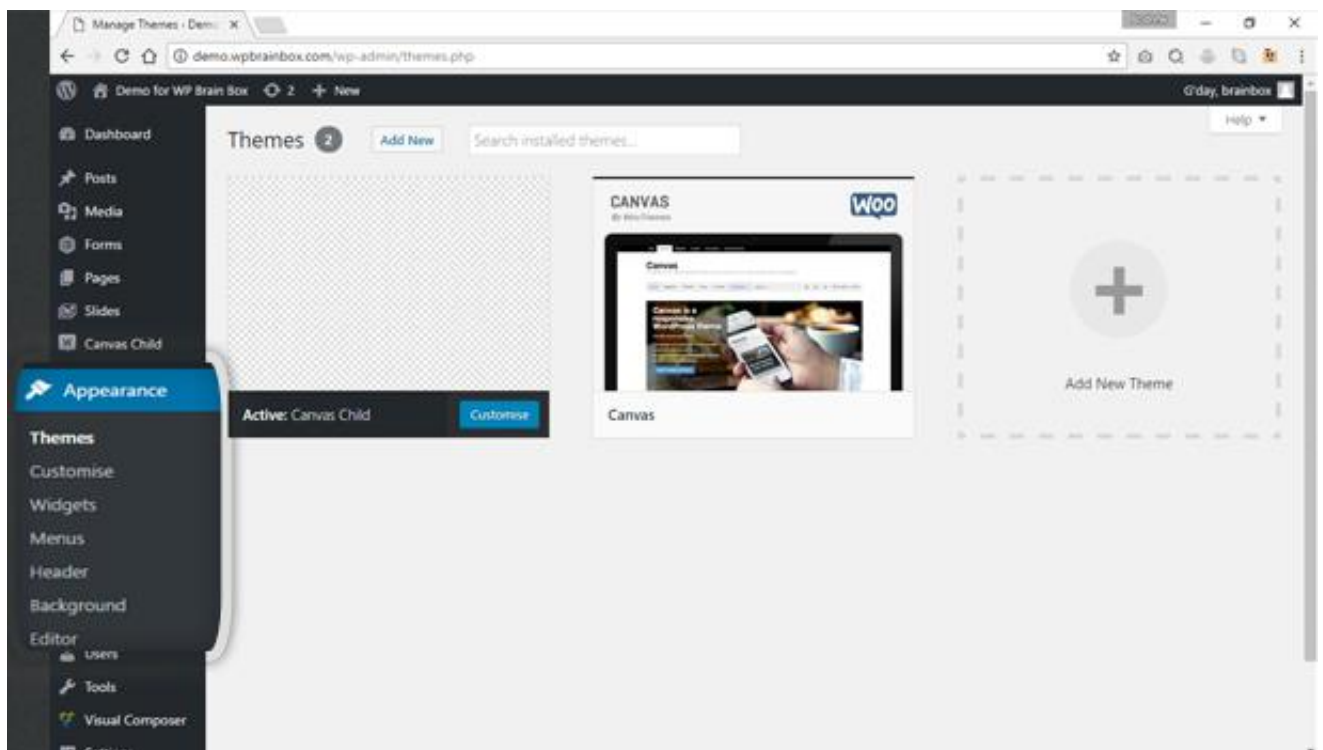
PAGES



This is where we put the pages of the website. Under Pages menu are:

- All Pages
- Add New

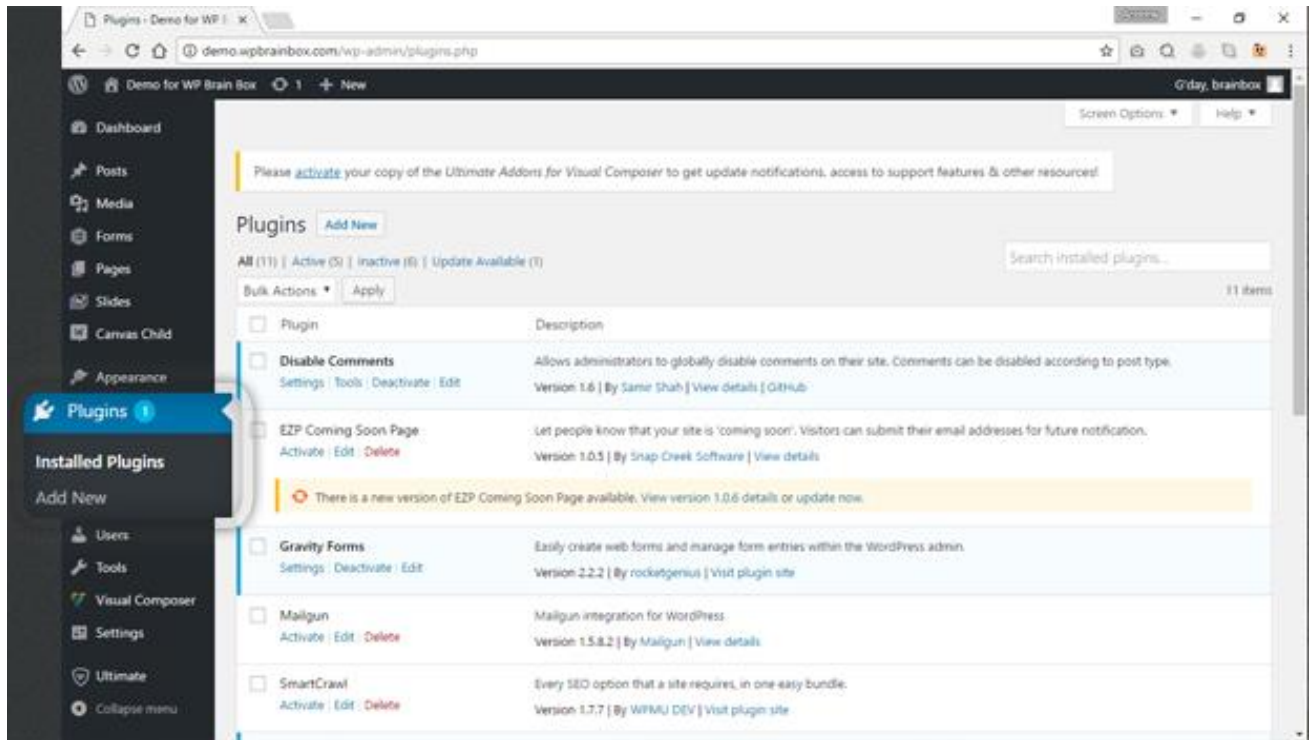
APPEARANCE



This is where you can modify the look-and-feel of your website. Under Appearances menu are:

- Themes
- Customize
- Widgets
- Menus
- Header
- Background
- Editor

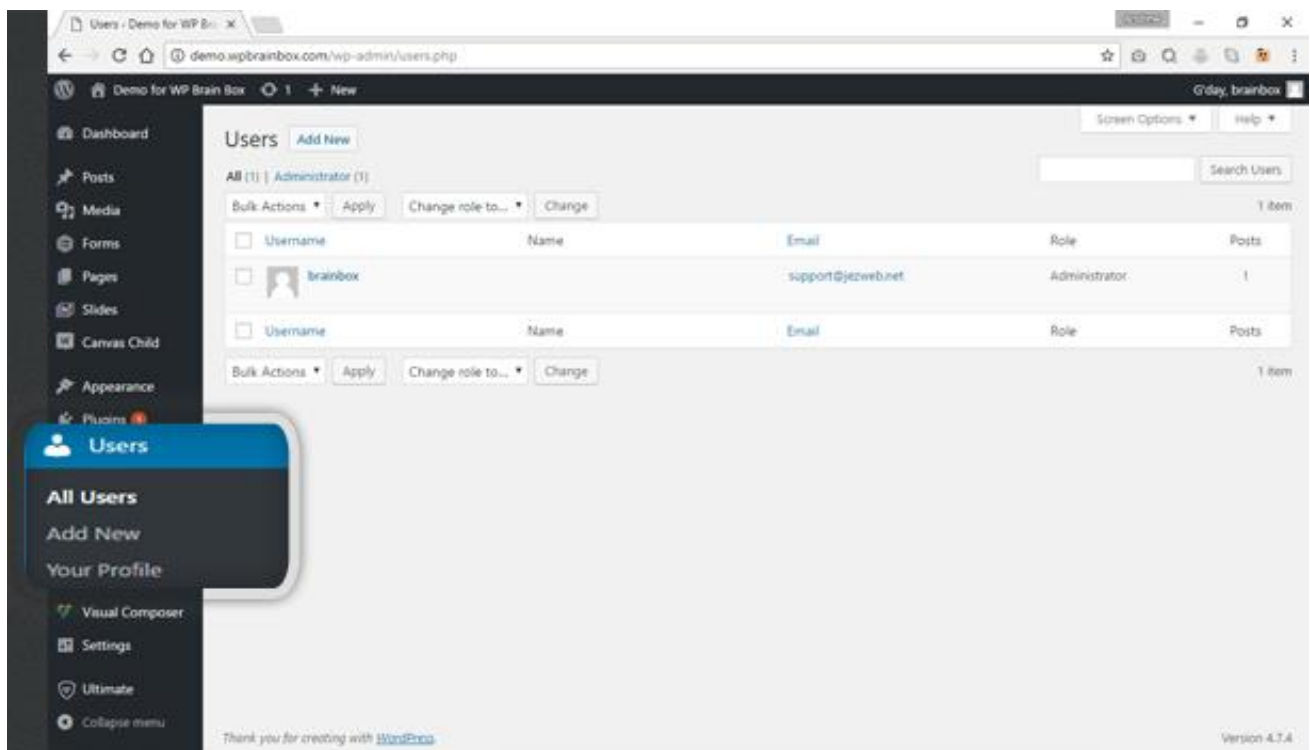
PLUGINS



This is where you can set your plugins. Under Plugins menu are:

- Installed Plugins
- Add New
- Editor

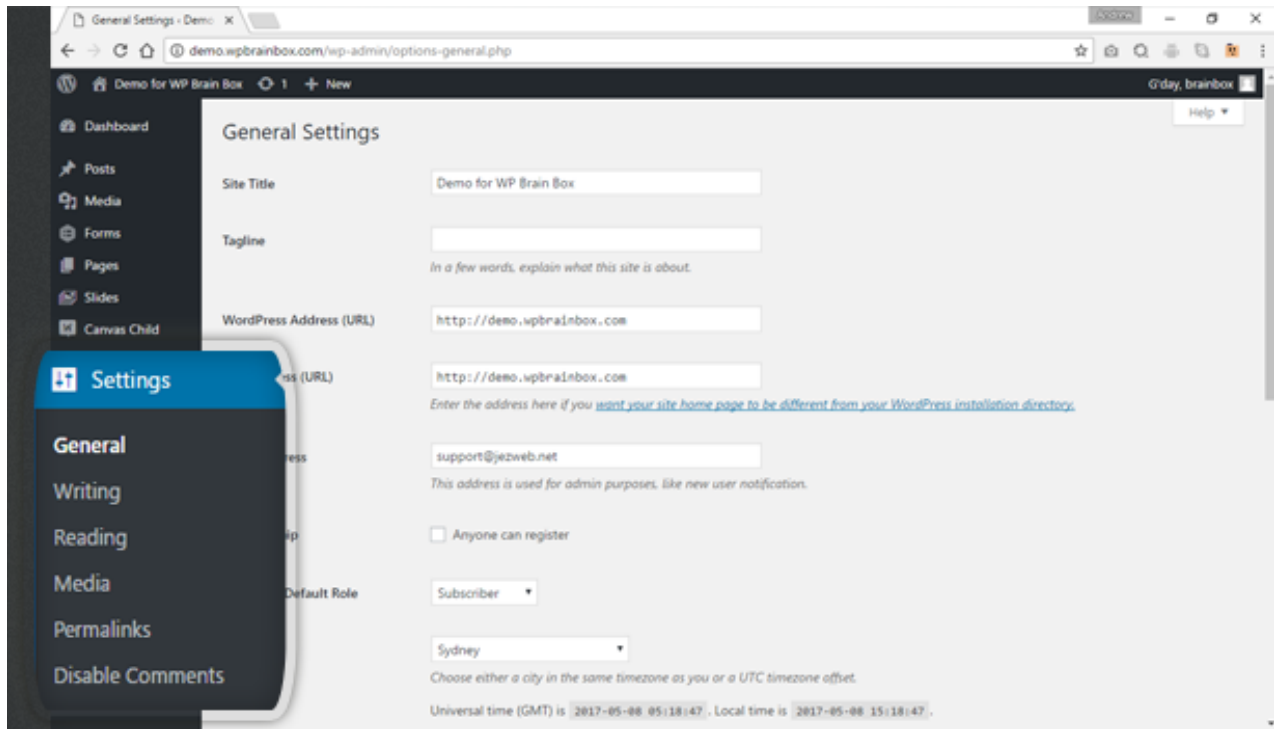
USERS



This is where you can manage your users. You can add, edit, or remove a user. Under Users menu are:

- All Users
- Add New
- Your Profile

SETTINGS



This is where you can set your overall settings of your website. Under Settings menu are:

- General
- Writing
- Reading
- Media
- Permalinks
- Mailgun
- Others (Plugin Settings)